

# Eumundi station platform upgrade

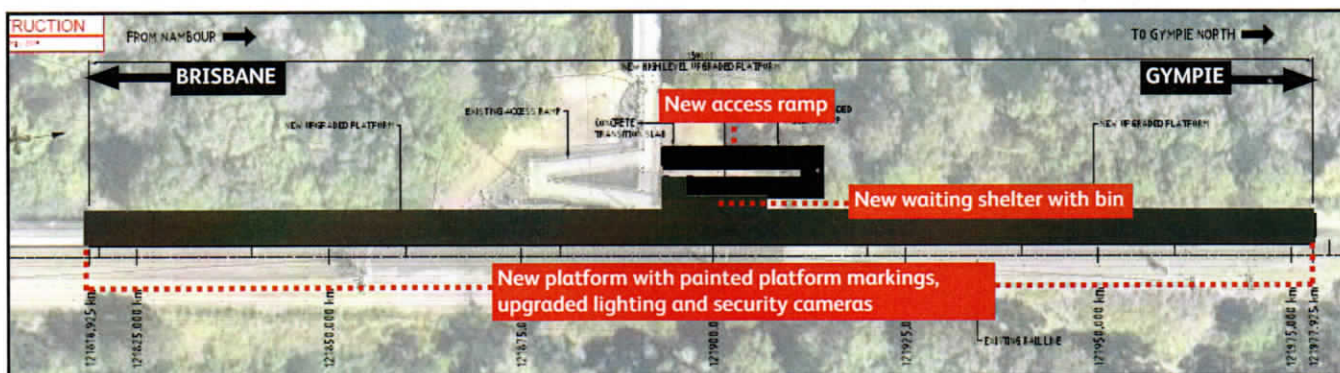
## May to December 2019

Queensland Rail will upgrade and modernise the platform at Eumundi station to improve facilities for customers. This is part of a \$4 million project to upgrade platforms at three Sunshine Coast line stations.

Works will be undertaken in two stages to limit impacts on services and will commence in June for approximately seven months. Early works began in May to prepare for the platform construction.

Geotechnical activities and the construction of a temporary rail crossing will be completed at night to minimise impact for our customers.

Queensland Rail will stage works to ensure customers can continue to access trains and the platform during construction.



Please note that the location of the platform has changed since originally advised. It will now be 70m further to the north. This will result in operational benefits and reduces construction time.

For further information, call **13 16 17** or email [communityengagement.com.au](mailto:communityengagement.com.au)